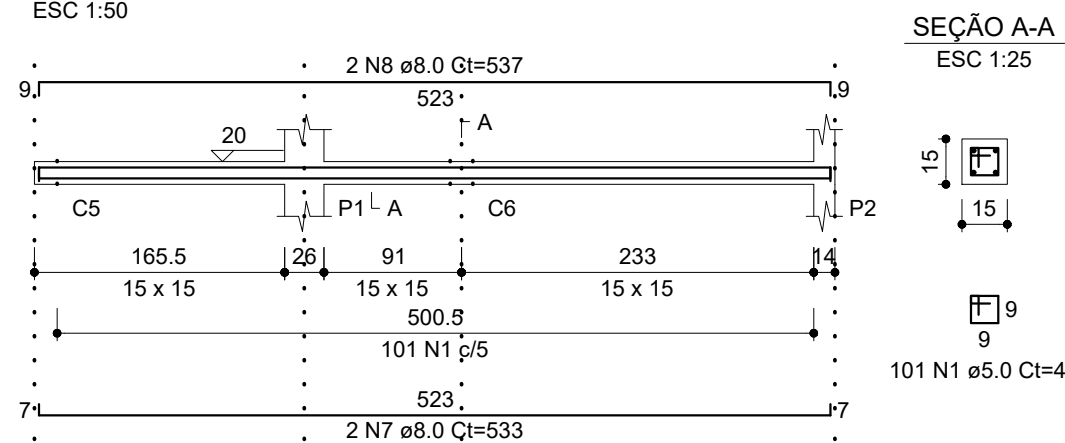
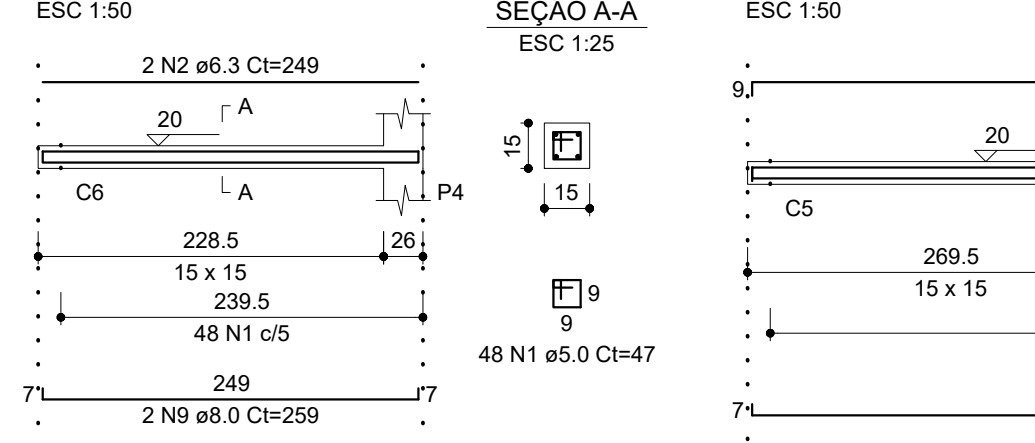


CINTAS

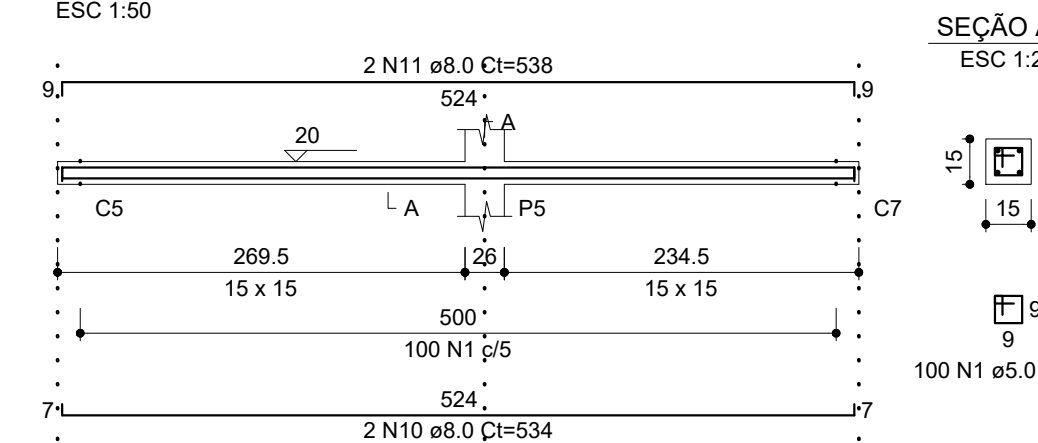
C1



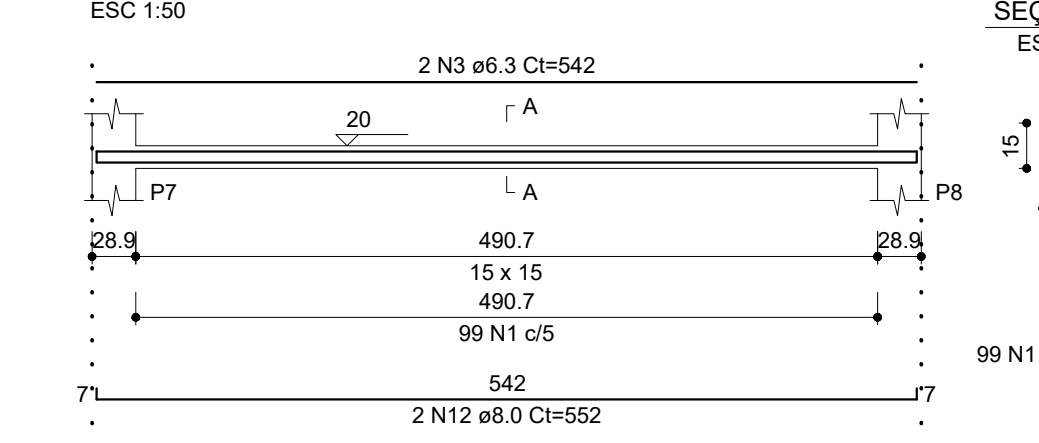
C2



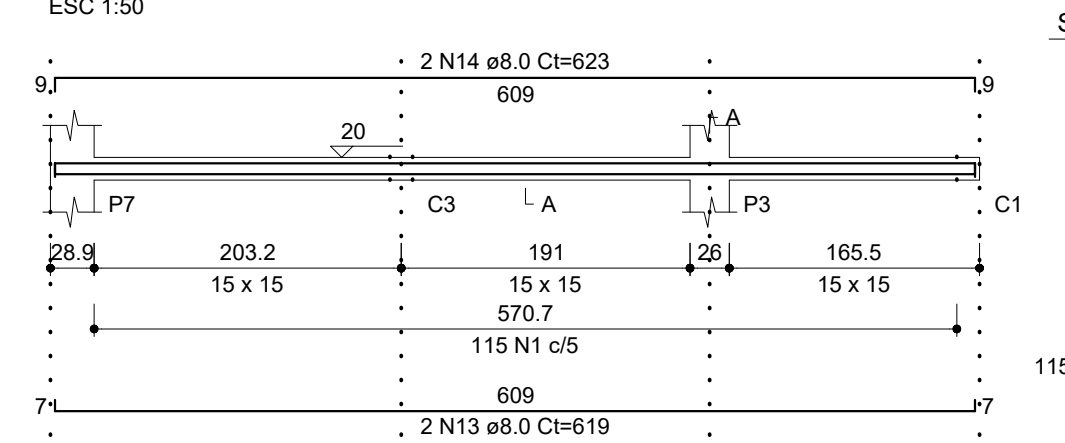
C3



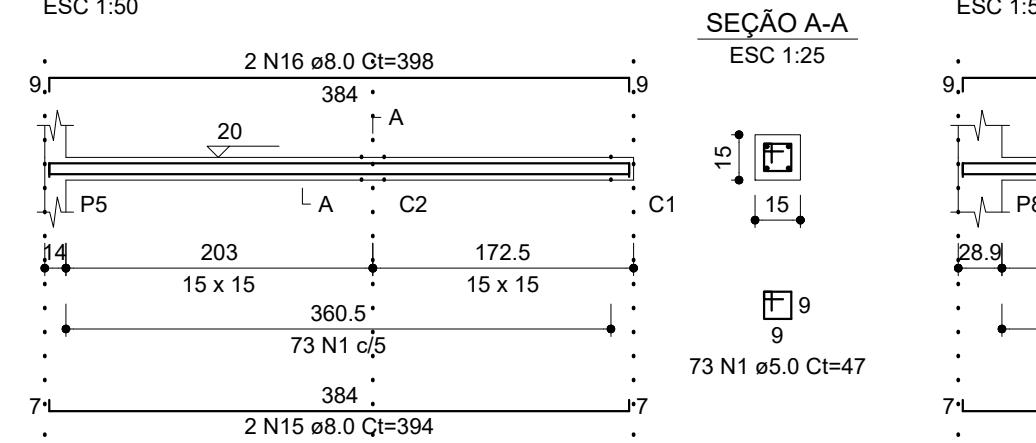
C4



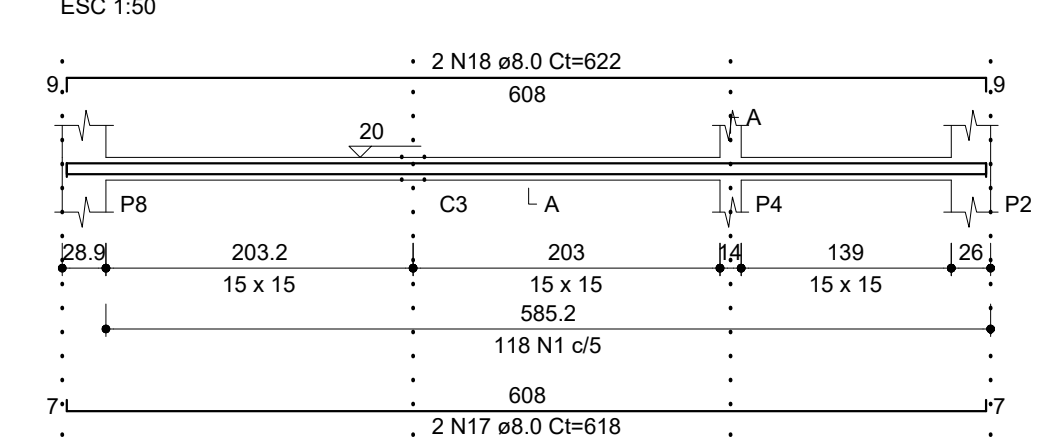
C5



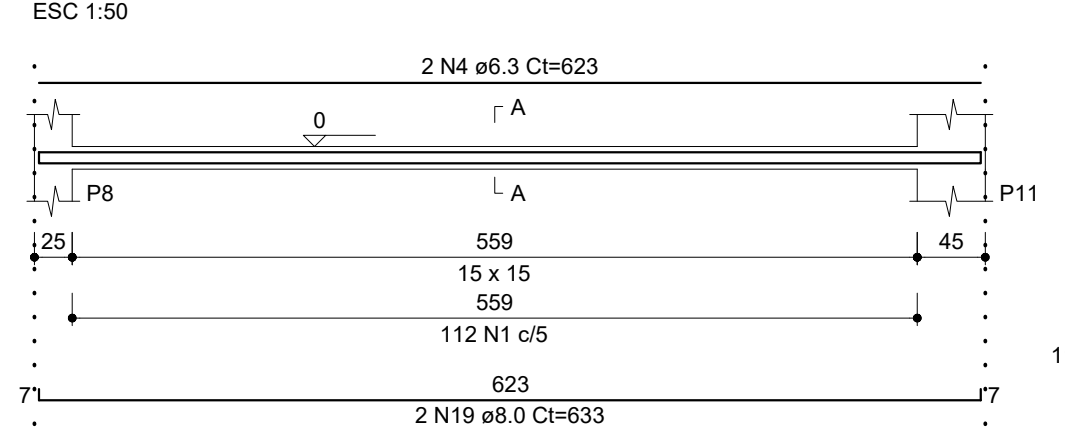
C6



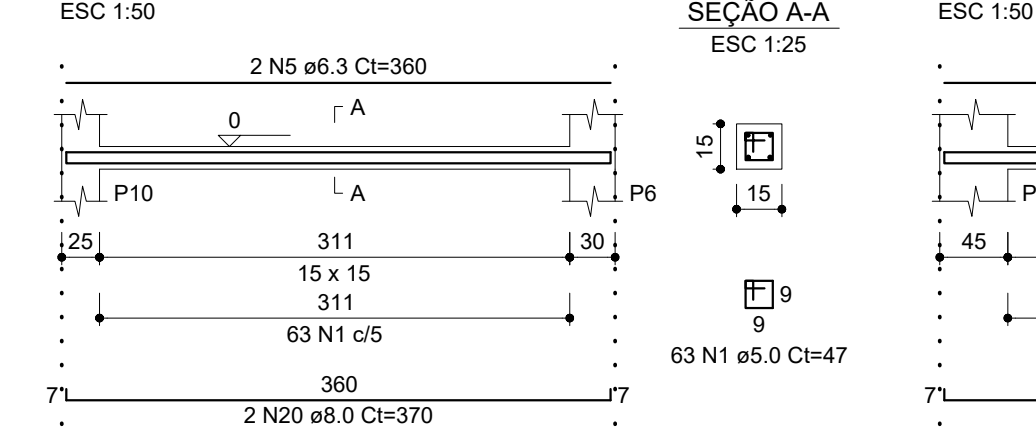
C7



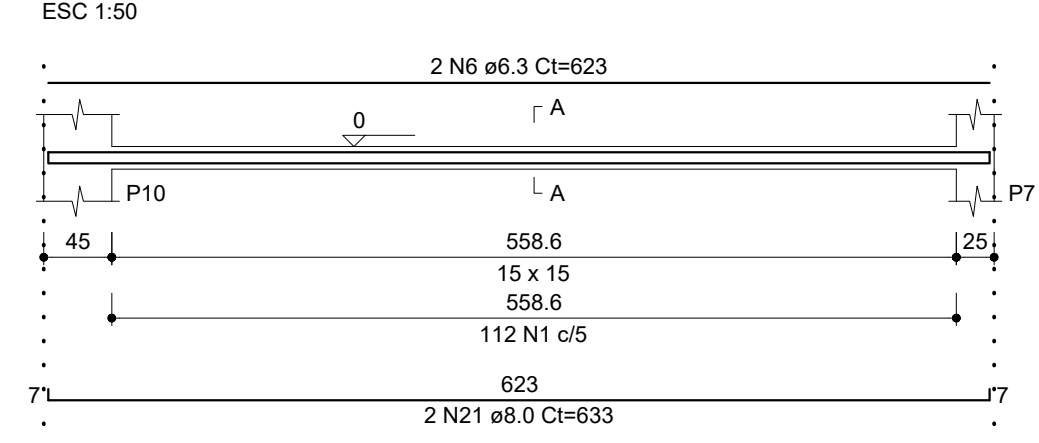
C8



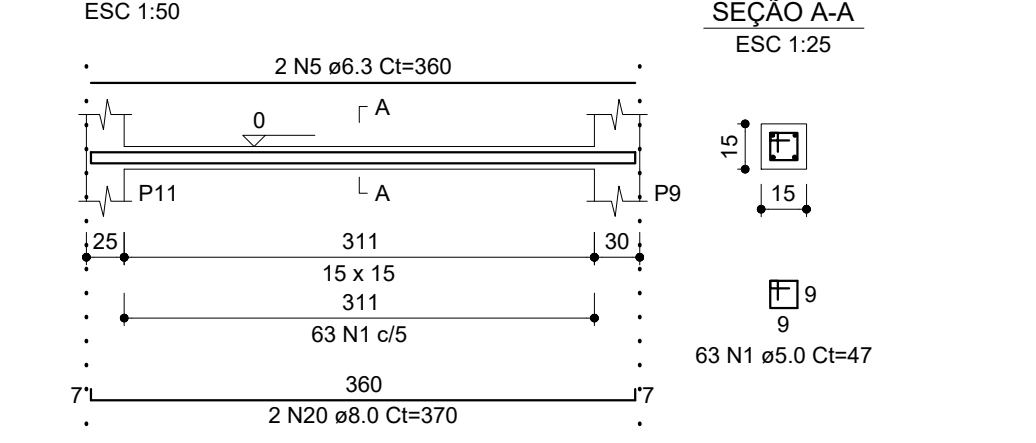
C9



C10



C11



RELAÇÃO DO AÇO

| AÇO | N | DIAM (mm) | QUANT | C.UNIT (cm) | C.TOTAL (cm) |
|------|----|-----------|-------|-------------|--------------|
| CA60 | 1 | 5.0 | 1004 | 47 | 47188 |
| CA50 | 2 | 6.3 | 2 | 249 | 498 |
| | 3 | 6.3 | 2 | 542 | 1084 |
| | 4 | 6.3 | 2 | 623 | 1246 |
| | 5 | 6.3 | 4 | 360 | 1440 |
| | 6 | 6.3 | 2 | 623 | 1246 |
| | 7 | 8.0 | 2 | 533 | 1066 |
| | 8 | 8.0 | 2 | 537 | 1074 |
| | 9 | 8.0 | 2 | 259 | 518 |
| | 10 | 8.0 | 2 | 534 | 1068 |
| | 11 | 8.0 | 2 | 538 | 1076 |
| | 12 | 8.0 | 2 | 552 | 1104 |
| | 13 | 8.0 | 2 | 619 | 1238 |
| | 14 | 8.0 | 2 | 623 | 1246 |
| | 15 | 8.0 | 2 | 394 | 788 |
| | 16 | 8.0 | 2 | 398 | 796 |
| | 17 | 8.0 | 2 | 618 | 1236 |
| | 18 | 8.0 | 2 | 622 | 1244 |
| | 19 | 8.0 | 2 | 633 | 1266 |
| | 20 | 8.0 | 4 | 370 | 1480 |
| | 21 | 8.0 | 2 | 633 | 1266 |

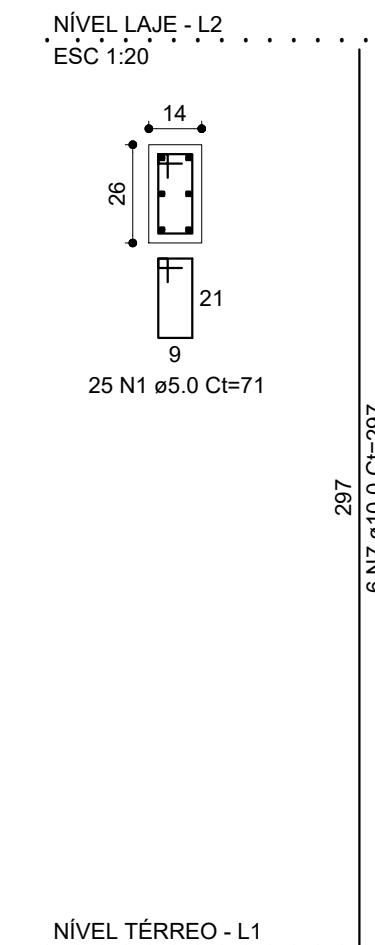
RESUMO DO AÇO

| AÇO | DIAM (mm) | C.TOTAL (m) | PESO (kg) |
|------------------------|-----------|-------------|-----------|
| CA50 | 6.3 | 55.1 | 13.5 |
| CA60 | 8.0 | 164.7 | 64.9 |
| CA60 | 5.0 | 471.9 | 74.1 |
| PESO TOTAL (kg) | | | |
| CA50 | | | 78.4 |
| CA60 | | | 74.1 |

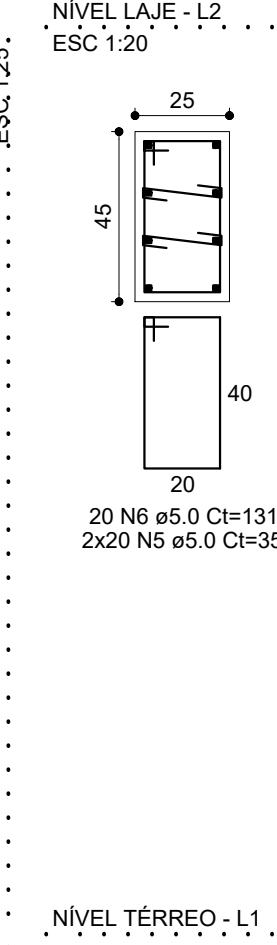
Volume de concreto (C-25) = 1.23 m³
Área de forma = 24.62 m²

PILARES

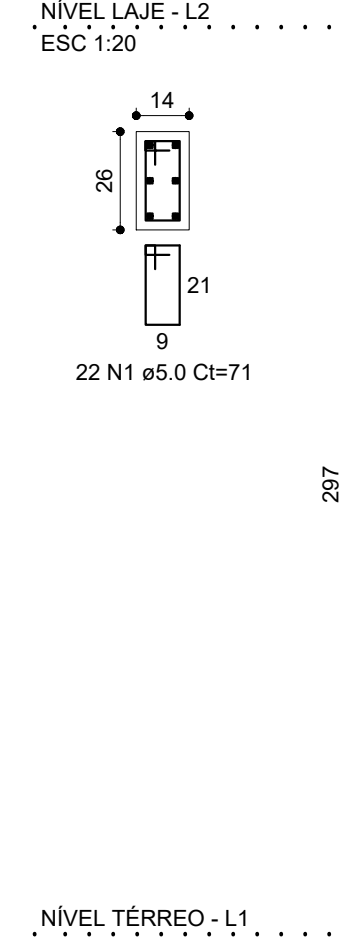
P1=P2=P5



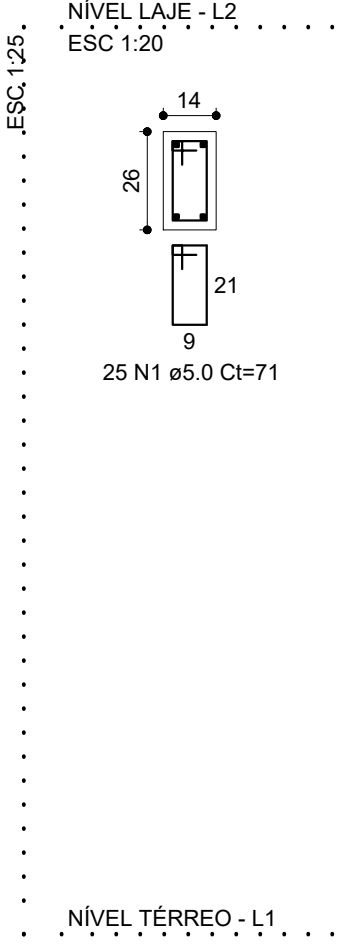
P10=P11



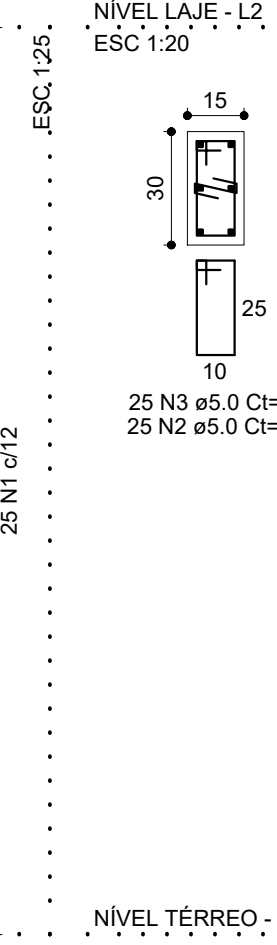
P3



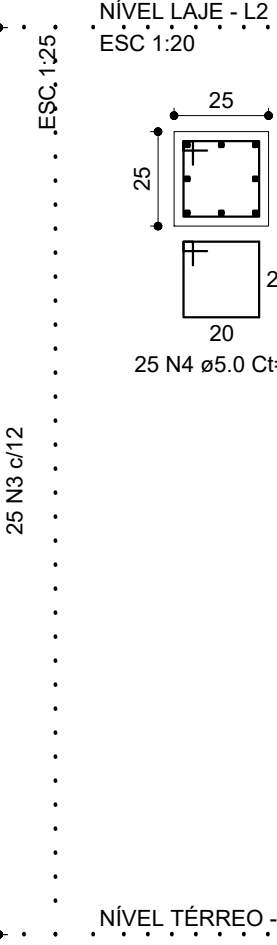
P4



P6=P9



P7=P8



RELAÇÃO DO AÇO

| AÇO | N | DIAM (mm) | QUANT | C.UNIT (cm) | C.TOTAL (cm) |
|------|---|-----------|-------|-------------|--------------|
| CA60 | 1 | 5.0 | 122 | 71 | 8662 |
| | 2 | 5.0 | 50 | 25 | 1250 |
| | 3 | 5.0 | 50 | 51 | 4050 |
| | 4 | 5.0 | 50 | 91 | 4550 |
| | 5 | 5.0 | 80 | 35 | 2800 |
| | 6 | 5.0 | 40 | 131 | 5240 |
| CA50 | 7 | 10.0 | 50 | 297 | 14850 |
| | 8 | 12.5 | 22 | 297 | 6534 |

RESUMO DO AÇO

| AÇO | DIAM (mm) | C.TOTAL (m) | PESO (kg) |
|------------------------|-----------|-------------|-----------|
| CA50 | 10.0 | 148.5 | 91.5 |
| CA60 | 12.5 | 65.3 | 65 |
| CA60 | 5.0 | 265.5 | 41.7 |
| PESO TOTAL (kg) | | | |
| CA50 | | | 156.5 |
| CA60 | | | 41.7 |

Volume de concreto (C-25) = 1.87 m³
Área de forma = 31.80 m²

RESPONSÁVEL TÉCNICO
Tayrone José Gonçalves
ARQUITETO E ENGENHEIRO
CAU nº A124289-0

CREA | CAU

DESENVOLVIMENTO
quintadimensão

PROJETO
ESTRUTURAL
CONSTRUÇÃO DO ESTÁDIO MUNICIPAL DE SENADOR POMPEU

| | | |
|--------------------------|--|--|
| DATA SETEMBRO DE 2018 | PROPRIETÁRIO (A) PREFEITURA MUNICIPAL DE SENADOR POMPEU | ETAPA PROJETO EXECUTIVO |
| ESCALA INDICADA | LOCAL SÍTIO CATOLÉ SENADOR POMPEU - CE | DESENHO TAYRONE JOSÉ FILEMON LUCAS |
| REVISÃO DATA | CONTEÚDO CÁLCULO ESTRUTURAL CINTAS PILARES | FRANCHA 3/6 |