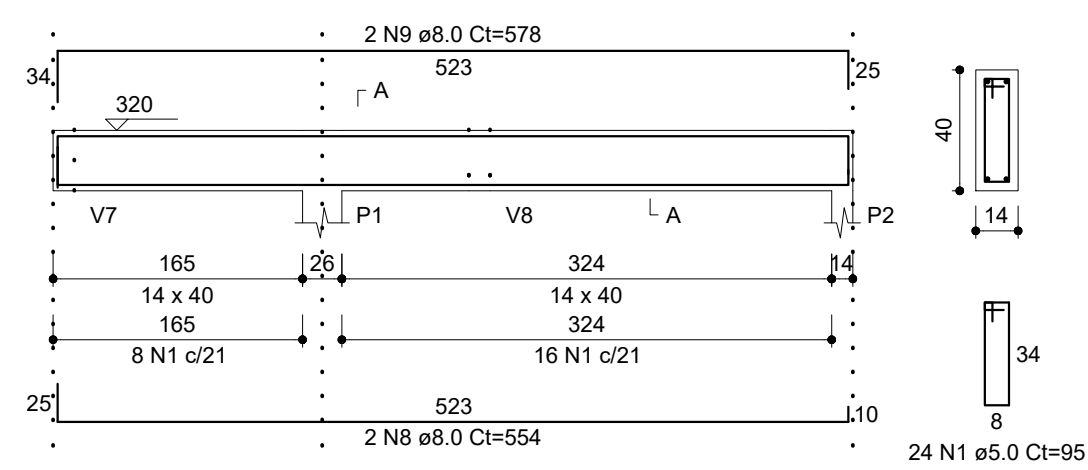
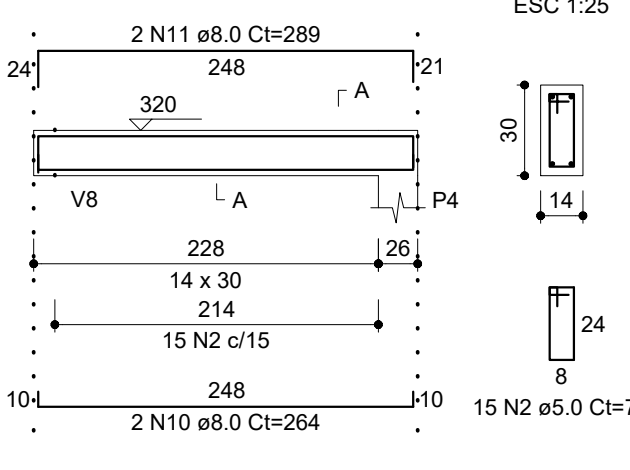


VIGAS

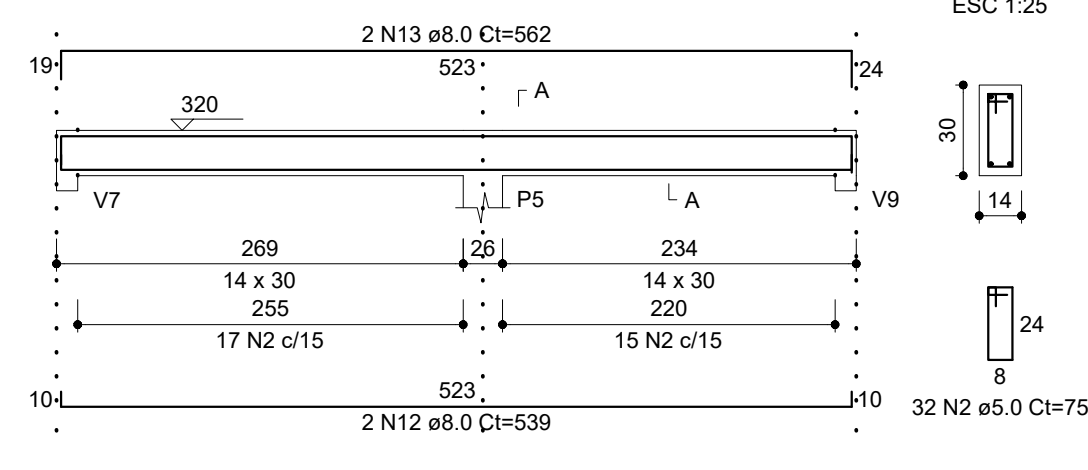
V1
ESC 1:50



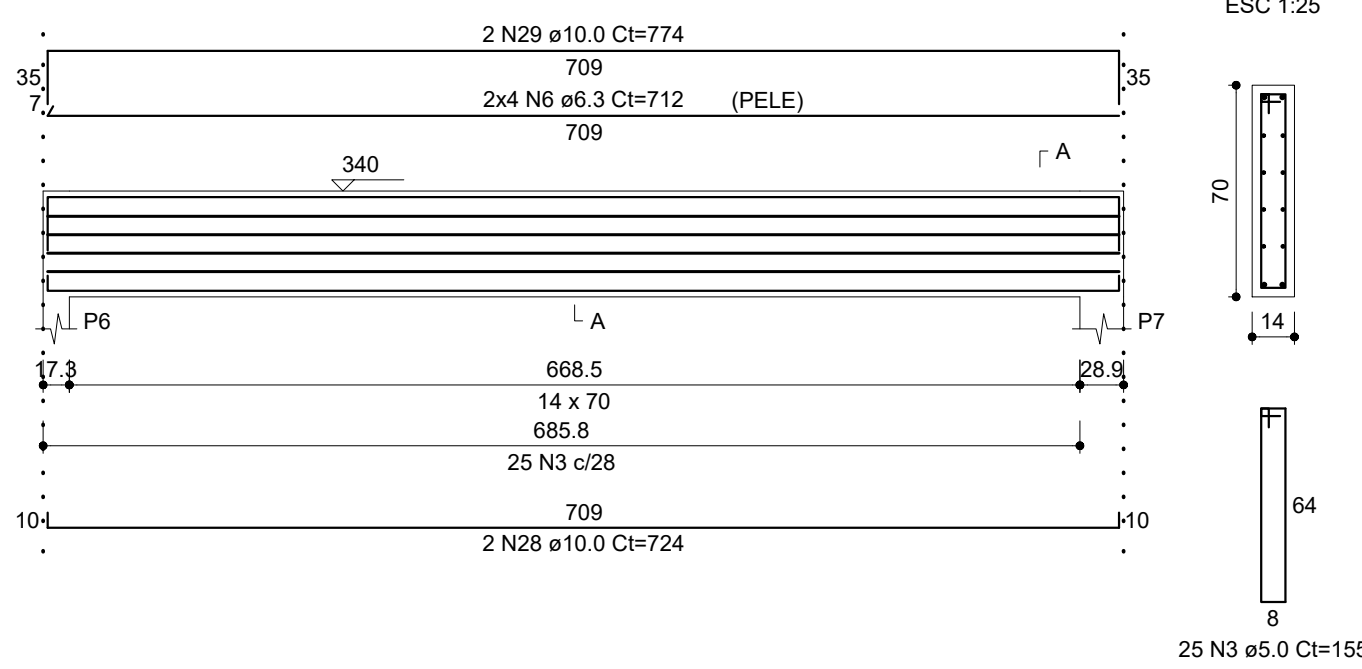
V2
ESC 1:50



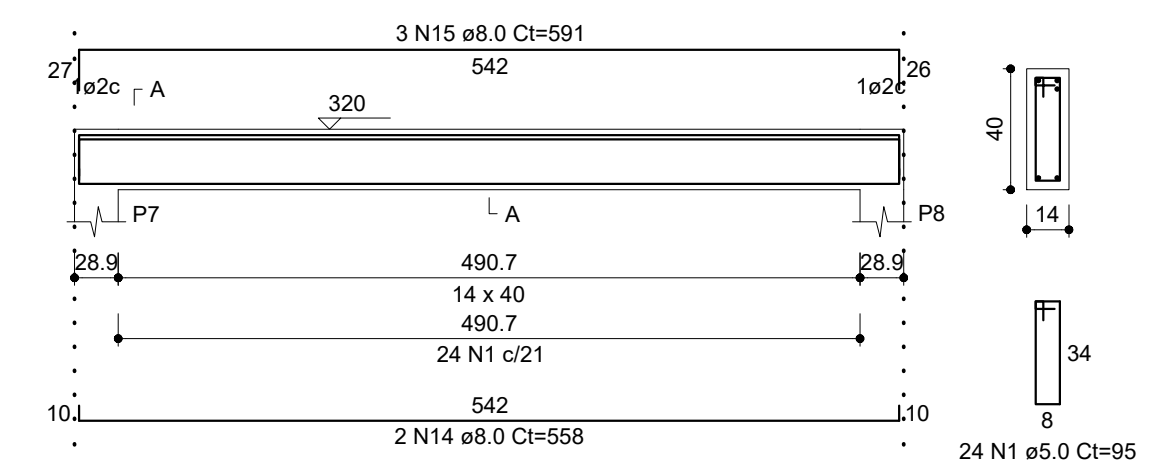
V3
ESC 1:50



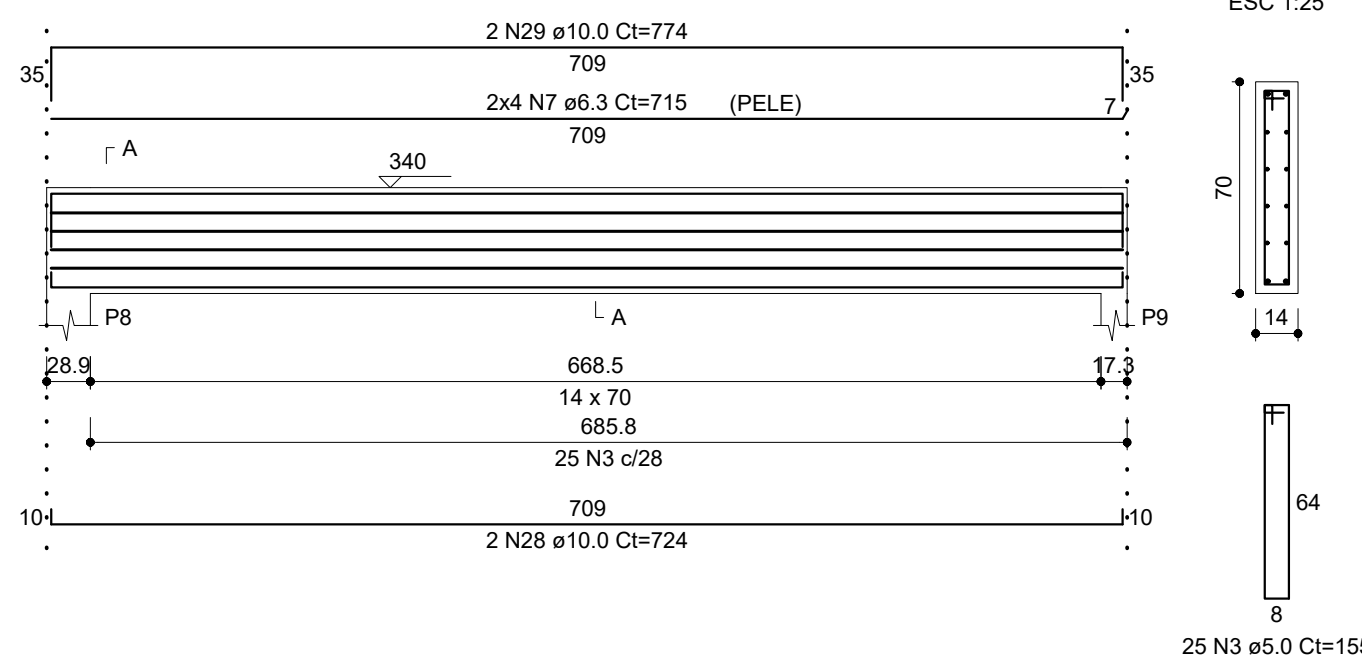
V4
ESC 1:50



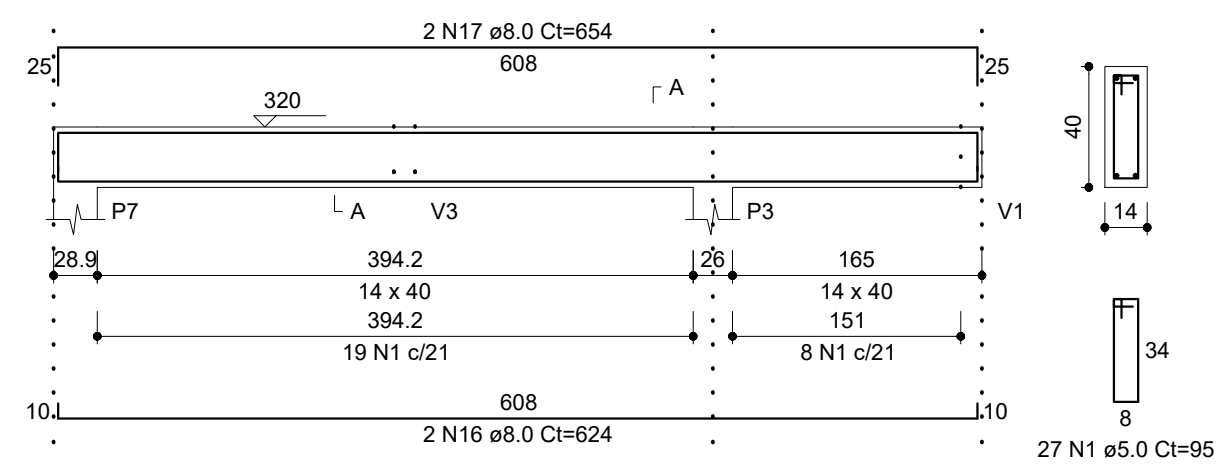
V5
ESC 1:50



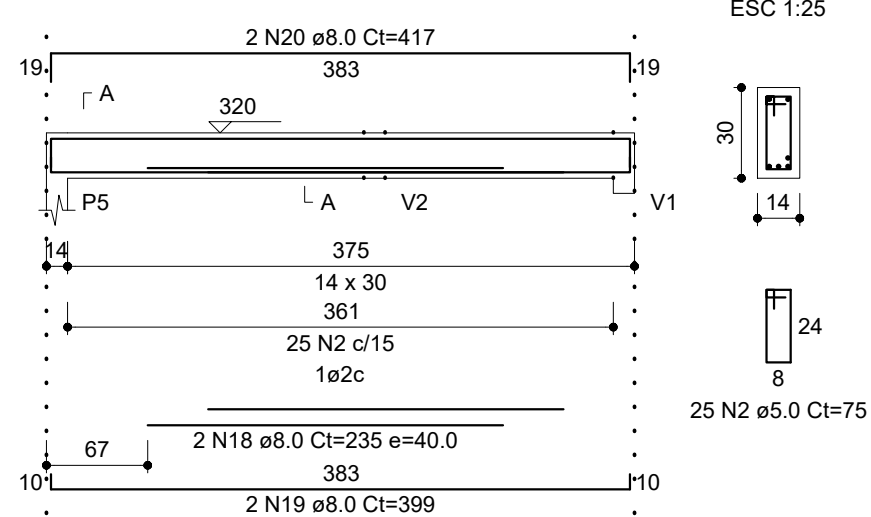
V6
ESC 1:50



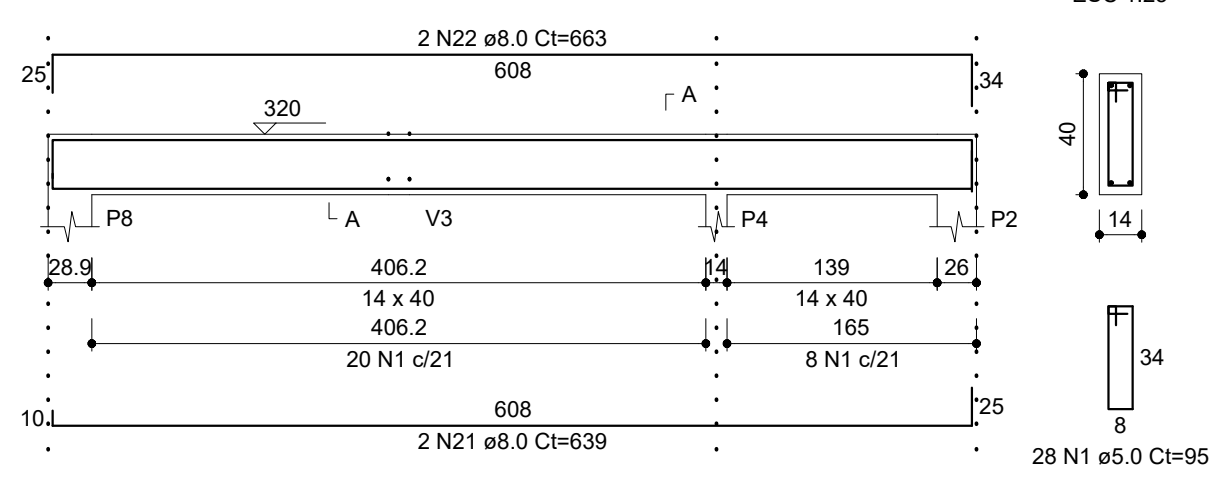
V7
ESC 1:50



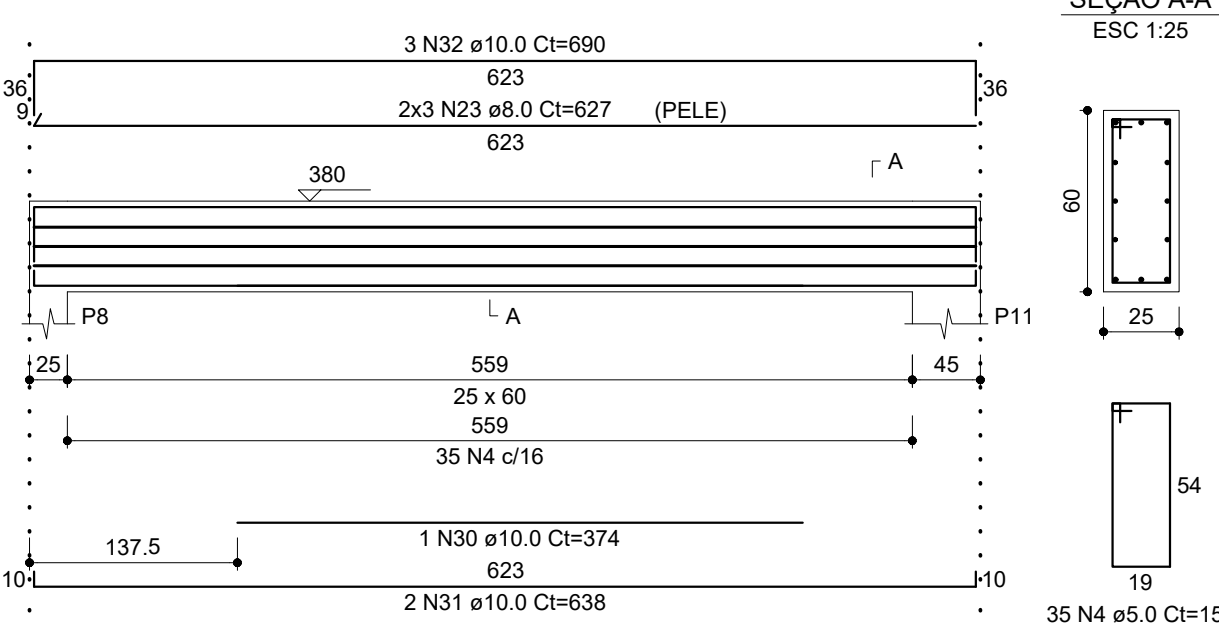
V8
ESC 1:50



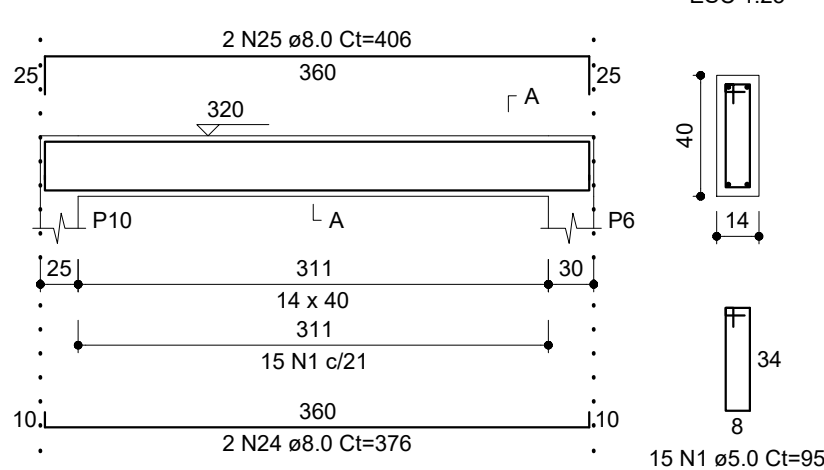
V9
ESC 1:50



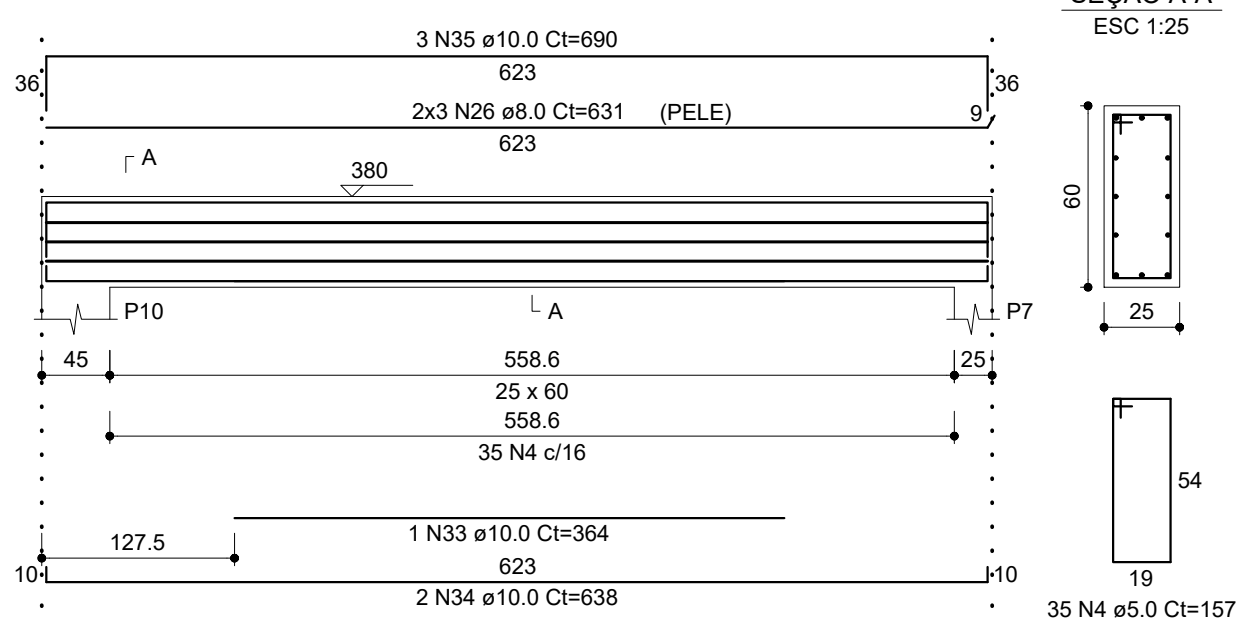
V10
ESC 1:50



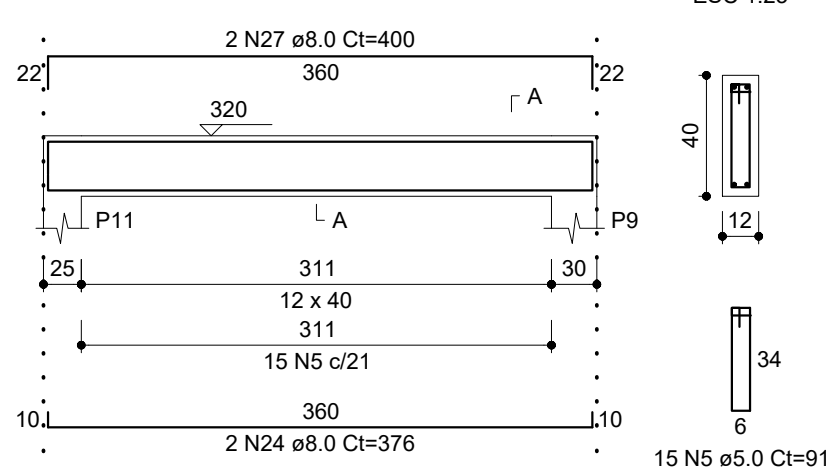
V11
ESC 1:50



V12
ESC 1:50



V13
ESC 1:50



RELAÇÃO DO AÇO

AÇO	N	DIAM (mm)	QUANT	C.UNIT (cm)	C.TOTAL (cm)
CA60	1	5.0	118	95	11210
	2	5.0	72	75	5400
	3	5.0	50	155	7750
	4	5.0	70	157	10990
	5	5.0	15	91	1365
	6	6.3	8	712	5696
	7	6.3	8	715	5720
	8	8.0	2	554	1108
	9	8.0	2	578	1156
	10	8.0	2	264	528
	11	8.0	2	289	578
	12	8.0	2	539	1078
	13	8.0	2	562	1124
	14	8.0	2	558	1116
	15	8.0	3	591	1773
	16	8.0	2	624	1248
	17	8.0	2	654	1308
	18	8.0	2	235	470
	19	8.0	2	399	798
	20	8.0	2	417	834
	21	8.0	2	639	1278
	22	8.0	2	663	1326
	23	8.0	6	627	3762
	24	8.0	4	376	1504
	25	8.0	2	406	812
	26	8.0	6	631	3786
	27	8.0	2	400	800
	28	10.0	4	724	2896
	29	10.0	4	774	3096
	30	10.0	1	374	374
	31	10.0	2	638	1276
	32	10.0	3	690	2070
	33	10.0	1	364	364
	34	10.0	2	638	1276
	35	10.0	3	690	2070

RESUMO DO AÇO

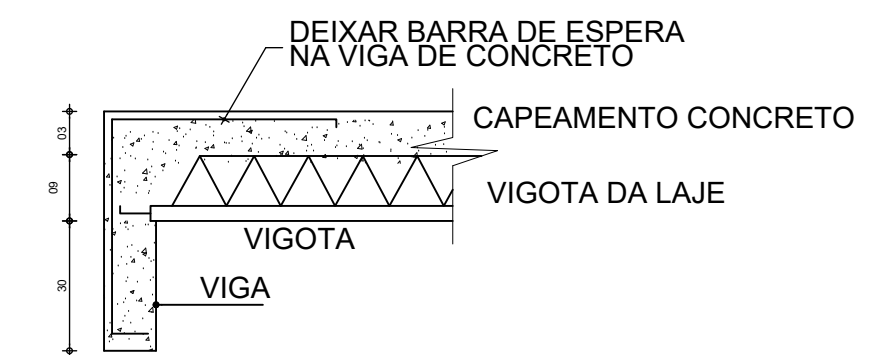
AÇO	DIAM (mm)	C.TOTAL (m)	PESO (kg)
CA50	6.3	114.2	28
	8.0	263.9	104
CA60	10.0	134.2	82.7
	5.0	367.2	57.7
PESO TOTAL (kg)			
CA50		214.7	
CA60		62.2	

Volume de concreto (C-25) = 7.28 m³
Área de forma = 77.40 m²

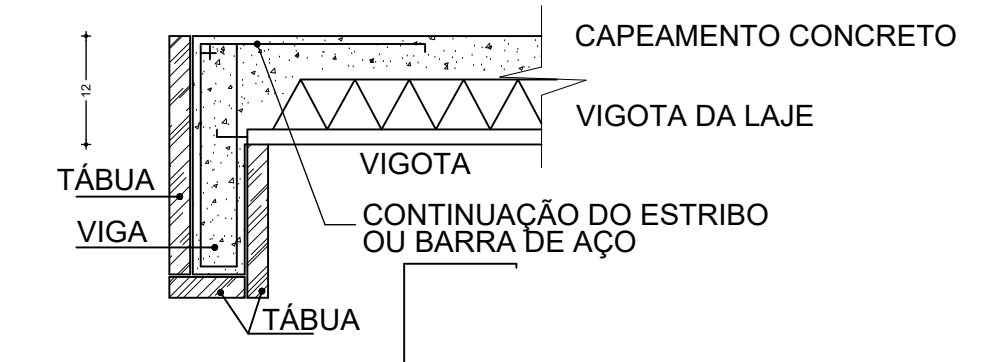
CONCRETAGEM DAS VIGAS SEM ESCALA

- AS VIGAS PODERÃO SER CONCRETADAS DE DUAS FORMAS:

- FAZER PRIMEIRAMENTE A CONCRETAGEM DAS VIGAS E POSTERIORMENTE A LAJE.



- CONCRETAGEM ÚNICA (VIGA+LAJE)



RESPONSÁVEL TÉCNICO Tayrone José Gonçalves ARQUITETO E URBANISTA CAU nº A124289-0	CREA CAU	
DESENVOLVIMENTO quintadimensão		
PROJETO ESTRUTURAL CONSTRUÇÃO DO ESTÁDIO MUNICIPAL DE SENADOR POMPEU		
DATA SETEMBRO DE 2018	PROPRIETÁRIO (A) PREFEITURA MUNICIPAL DE SENADOR POMPEU	ETAPA PROJETO EXECUTIVO
ESCALA INDICADA	LOCAL SÍTIO CATOLÉ SENADOR POMPEU - CE	DESENHO TAYRONE JOSÉ FILEMON LUCAS
REVISÃO DATA	CONTEÚDO CÁLCULO ESTRUTURAL VIGAS DETALHAMENTOS	FRANCHA 5/6